

BROOKLYN, NEW YORK 11208

THE **HIGHLAND** DOLLHOUSE

THE HIGHLAND DOLL HOUSE KIT contains 21 numbered die-cut wood sheets, 1 plastic window sheet, sandpaper and instructions and schematic parts diagram with Template. Have on hand any household glue suitable for wood, masking tape, pencil; also any hardware, paint, miniature wallpaper, etc. you may desire.

READ CAREFULLY THROUGH ALL INSTRUCTIONS BEFORE ASSEMBLING; FAMILIARIZE YOURSELF WITH ALL PHOTOS.

**IMPORTANT NOTE:** Before you begin, carefully remove each sheet from box. Leave parts in wood sheet until needed for assembly. Referring to the PARTS DIAGRAM (Schematic), lightly mark in pencil the sheet number and letter designation on each separate piece. This simplifies identification of parts.

**ASSEMBLY HINTS:**

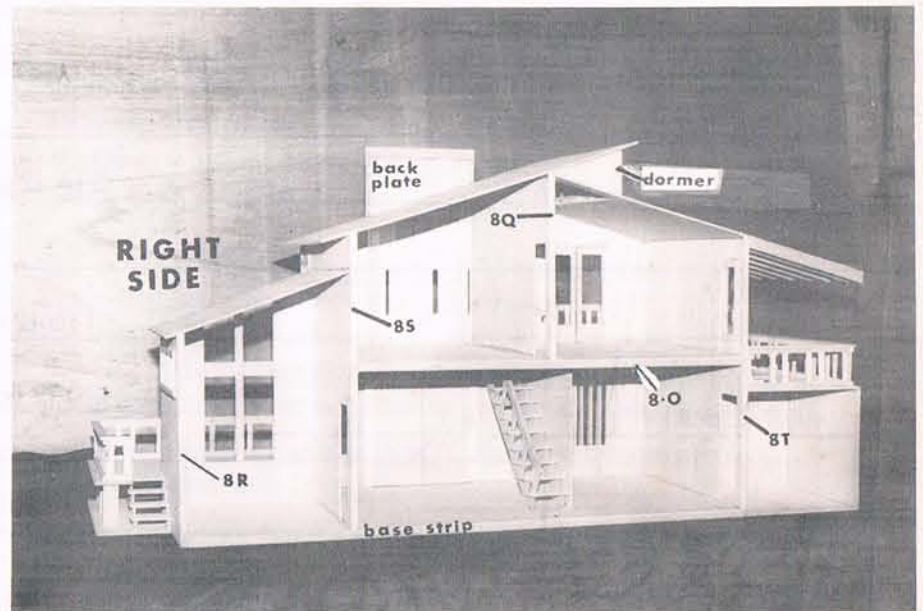
1. Follow instructions in the order presented. Refer to photo on box during assembly.
2. Smooth side of wood faces outside surfaces (exterior) of house.
3. Should any parts fall out of the wood sheets before marking for identification, REFER TO TEMPLATE DIAGRAM. Match the part to the same size drawing and mark for identification.

4. Before gluing any part, check for proper positioning and fit. Sand parts lightly, where necessary, exercising care when sanding in direction of grain to avoid splintering.

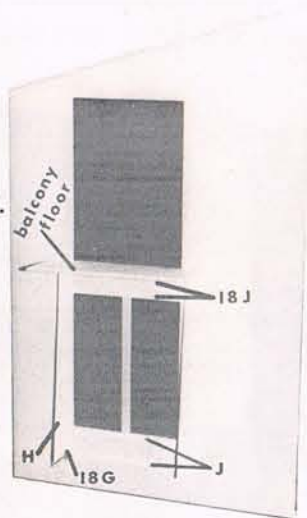
5. Use care in removing windows from plastic sheet so they do not tear. You may want to use scissors.

6. **PAINTING:** It is easier to paint (or stain) and wallpaper before assembly. Paint only those parts called for in the section on which you are working. Lay parts on paper and write identification next to each part. Allow parts to dry away from heat.

**ORIENTATION:** As you face house from front, Left Side is to your Left. (From rear, Left side is to your Right).

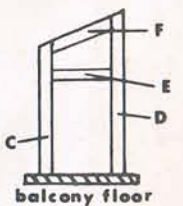
**A** PLANTER WINDOW & BALCONY ASSEMBLY

1. a) Remove Left Front wall from Sheet #6: Remove scrap & planter parts #6C, D, E, F. Locate Sheets #8 and #18. Remove balcony floor from Sheet #8.  
b) Place left front wall on your work table, face up. Apply glue along one long edge of balcony floor #8 and center it under the doorway, flush with the bottom of the doorway cut-out.
2. Carefully remove the (large) planter window from the plastic sheet. Run a very Thin line of glue around the outline of window opening and install plastic.
3. Install 2 side trims #18G, butting against underside of balcony floor (flush along window edges). Install 4 pcs. #18J between the side trims, as illustrated. (Be sure that bottom 18J is flush with the ends of 18G).
4. a) Apply glue to long straight edge of each #18H. Install alongside each window trim 18G (in previous step), so that the bottom angles out. (See photo in Section on Garage Assembly).  
b) Install planter bottom #6E under the window trims, with notched edge against front wall.  
c) Install #18A, inserting its small tab into the first notch in planter bottom. (NOTE: before gluing, sand tab to fit easily into notch). Glue the piece against the window trims (18J) and to underside of balcony floor.  
d) Similarly, install #18B into notch at other end of planter bottom.  
e) Install remaining Slats #18 I (5 pcs.).
5. Glue left & right planter sides #6C & D (respectively) onto slats (18H) on each end of planter. Glue planter front #6F onto front edges of side pieces.



6. Install Trim around balcony door opening in order: #18 C, D, E, F. Be sure 18F is flush with Top edge of wall.

7. Strip out doors & door backs from sheet #18. Remove 2 corresponding windows from plastic sheet; install each to back side of each door. Then, "sandwich" plastic in between each door and door back. You may now glue or hinge balcony doors in place.



8. a) Apply glue to one long edge of each balcony railing #8V and place behind either end of railing #8W, Flush to Edge.

b) Apply glue to Top edges of railings and install handrails in order #8U, U, P, centered on top of railings.

c) Glue railing assembly on to balcony floor, center in front of doorway.

d) Set aside Left front wall assembly to dry.

**B** WALLS, FLOORS & ROOFS

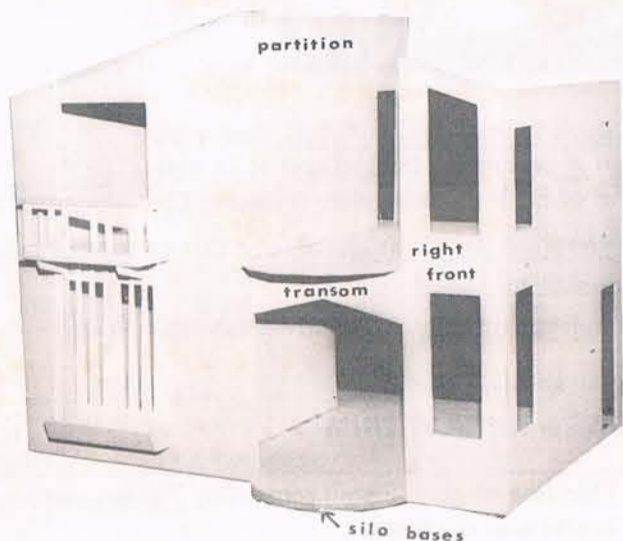
1. a) Strip out 1st Floor, #1. Gather base strips #21C, C, D, D. Place floor on your work table, face down. Apply glue along one long edge of 21D and install along rear underside of floor. (Flush with edge of floor). Next, install both side base strips C, then front strip D. Tape corners until dry.

b) Glue 2 silo bases #9 together (one on top of the other). Install to underside of floor, all front edges even.

2. Turn floor over, resting on base strips. Strip out Right Side Wall #2, (Remember to label parts). Apply glue along right side edge of floor (and on its base strip) and install Right Side Wall #2, front edge even with floor. (small tab at bottom will be even with rear edge of floor). (Remember, if you are facing house from the rear, Right side is to your left). Support with object until dry.

3. Similarly, install Left Side wall #3 (small bottom tab at rear).

4. Take assembled Left front wall #6 (from step 1). Apply glue along front edge of Left sidewall and on front base strip. Install Left front wall, forming a perfect corner with the side wall. If necessary, sand to flush corner.
5. Similarly, install Right front wall #7. (Label parts removed from this sheet).
6. Apply glue to bottom edge only of 1st floor partition #5. Install with tabs in 1st floor.
7. Install the 2nd floor #4, fitting side tabs into side wall slots and aligning top tabs of 1st floor partition.
8. Apply glue to front and bottom edges of 2nd floor partition #5. Install with tabs in 2nd floor slots, forming a perfect corner with front wall. (Note: rear edge of partition will be recessed from rear edge of floor about 1/8").

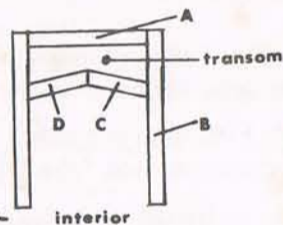


9. a) Gather vertical trim strips #8Q, S, T. (8R is for use later). Apply glue along rear edge of Left side wall (to your right as you face rear of house) and install 8T. Strip should be flush with side wall, resting inside the small notch in the rear of 2nd floor (See parts diagram #4). Similarly, install 8S on right side wall. Center 8-Q on rear edge of 2nd floor partition.

- b) Install strip #8-0 under rear edge of 2nd floor. (If necessary, sand to fit).

10. a) Install Transom #7 over entrance door opening, top edge glued to underside of 2nd floor. (even with front wall).

- b) Inside the house install doorway trim in order: #16 B, B, C, D, A. (Side trims butting doorway opening)



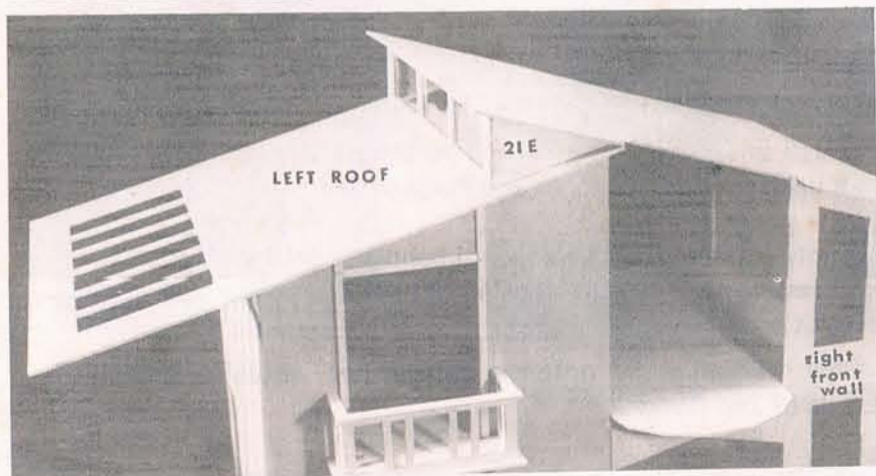
11. Apply glue along top edges of left front wall, side wall and partition. Install Left Roof #13; tape partition tabs into roof notches until dry. (Rear edge flush with vertical trim strips on side wall and partition).

12. a) Strip out dormer frame #21. Outline the back side of frame with a Thin line of glue. Remove plastic window from sheet and install on interior side.

- b) Apply glue along "untabbed" edge of each dormer side #21E. Install behind each end of dormer frame.

- c) Install this dormer assembly on house, aligning tabs into slots in left roof.

13. Apply glue along top edges of dormer assembly and right side wall. (Do not glue right front wall to underside of roof at this time). Install Right Roof #12, aligning slots over dormer tabs (rear edge flush with vertical trim strip on side wall).



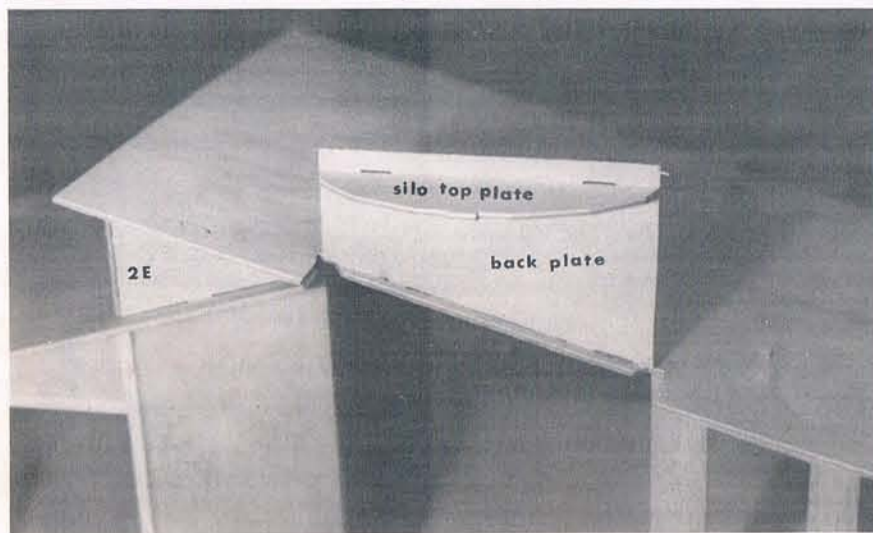
## C SILO

1. Glue Silo Top #8 onto inside surface of Silo Back Plate #8, at a right angle. Set aside to dry.
2. Gather Silo Slats #8A, B, C, D, E, F, G.
  - a) Strip out cut-outs in slats C & E. With a Thin line of glue install corresponding plastic windows on the Interior side. Install Interior Trim #2B on each. Set aside.

3. Install Silo Back Plate (see preceding step) into Slots on Right Roof (Silo Top facing forward). Allow to dry at a right angle to roof.

ASSEMBLY NOTE: Proceed with the following step 4. Without actually gluing the parts in place. Use masking tape to hold the parts together. This will enable you to get a "tight fit" of the Silo Slats, sanding where necessary and properly aligning The Slats along the floor and top plate edges. Then proceed to glue the parts together.

(There may be a slight space where the Silo edges meet the front walls of house. This will be hidden by Trim Strips in Step 5).



4. a) Install the center Silo Slat #8D, aligning slot over tab protruding from Silo Top. Also glue it against edge protruding from 2nd floor. (Be sure not to pull down on Silo Top; it should remain parallel to the floor below).

- b) Install the remaining Silo Slats, alternating to the Left and Right of the center slat D; Thus, install in order #8C-E-B-F-A-G. (Be sure the top edges of all the slats are even with each other).

5. Install Trims #7 E & F, butting against right and left sides of Silo, (Slats G & A) respectively. (Be sure Not to slide the strips behind the silo slats).

6. a) Glue on, in order, #8X, Y, X around the 3 remaining edges of the Silo base.

- b) Glue Top Trim #8K at the top of the center silo slat (covering the slot). Then work around to the left and right of the center piece with Top Trims #8L, M, N.

7. Gather entrance doors, backs and blocks A-E from Sheet #17. Apply glue to back side of doors and press against door backs. Center the blocks removed within each opening. Sand doors and glue or hinge in place.

## D GARAGE & SIDE PORCH

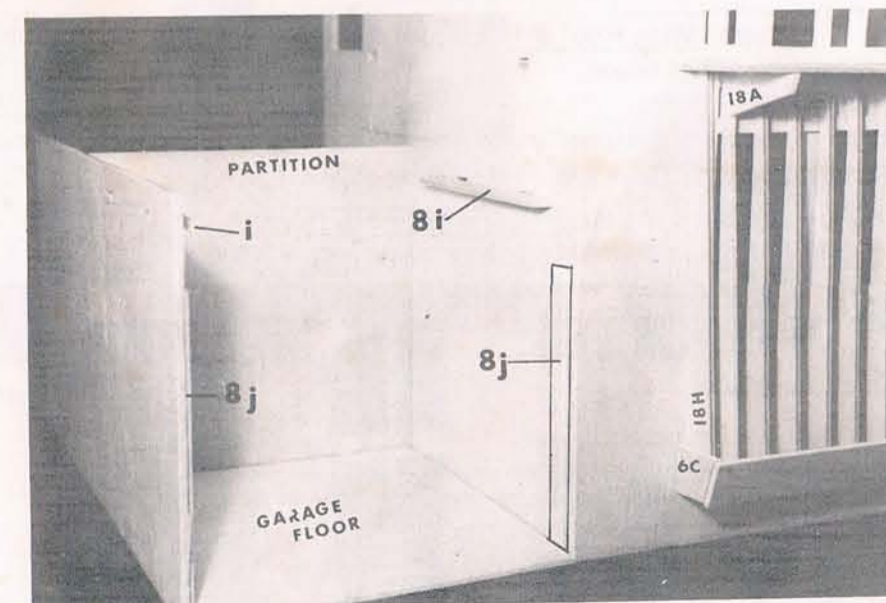
1. Apply glue along one long edge of Garage Floor #15. Install along bottom of Left Side wall, flush with front of house.

2. Install partition #16, fitting tabs into slots in garage floor. (Glue partition against the house wall also, for strength).

3. Apply glue along the outside (left side) edges of garage floor and partition; Install Garage Side wall #15, front edge flush with floor (Slots to be in Top Front of side wall).

4. a) Apply glue along tabbed edge of each Track #8 I. Insert one track into slots in the house wall; the other in the garage side wall.

- b) Install upright door stops #8J; one flat against house wall and the other on the garage side wall, both recessed about 1/4" from front. (Both resting on garage floor). See photo.



5. Apply glue to top edges of garage walls and along tabbed edge of Garage Roof #15. Install, with tabs in house side wall slots.

6. Apply glue to one long edge of #8H; install under front edge of garage roof.

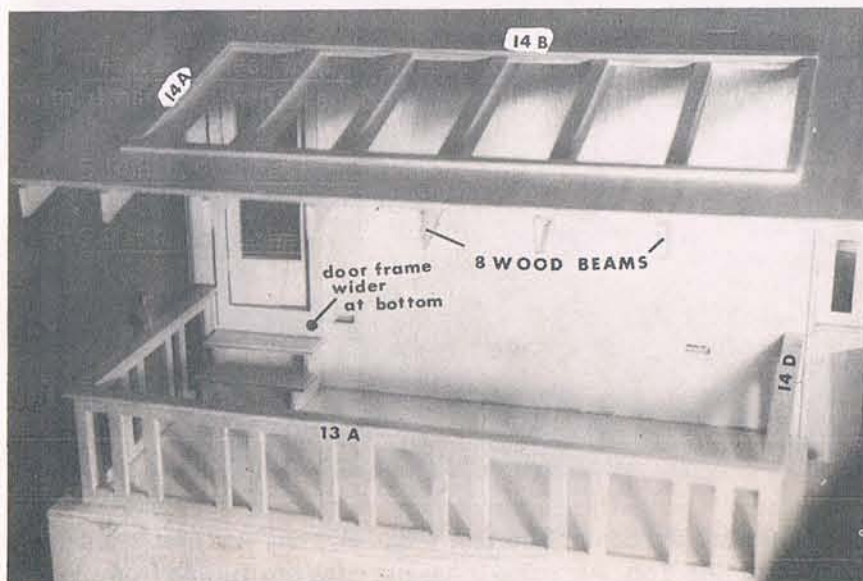
7. a) Strip out Garage Door #16; glue handle #16E into slot in bottom.

b) Install Garage door back #16, centered behind garage door.

c) Insert garage door into garage. To open, grasp handle, swing out, then slide back.

8. a) Install door frame #3 on the outside of porch doorway in house side wall – with wider edge of frame at bottom of doorway. (See photo).

b) "Sandwich" appropriate plastic window between the door & door back, #3. Install door in side wall.

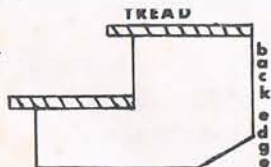


9. a) Strip out porch railings #13A, B, B. Apply glue to one short edge of each 13B and position each flush behind either end of 13A.

b) Install, in order, handrails #14D, D, C, centered on top of railings.

c) Install railing assembly around porch, over garage.

10. Gather stair sides #3 I, J and 2 treads #3C. Glue treads across the stair sides, (See photo) to form step assembly. Install under porch doorway.



11. Gather 8 wood beams #14. Apply glue to long edge of one beam and install under porch roof (Left roof overhang), flush with front edge of cut-out in roof (and butting against side wall of house). Note that bottom edge of beams slants outward. Similarly, install a beam under rear edge of roof cut-out. Next, center a beam under each of the 5 "slats" in the roof cut out. Install last beam even with the rear edge of house.

12. Install, in order, Trims #14A, A, B, B around the top of roof cut-out.

## E RIGHT SIDE WING & SUN DECK

1. a) Glue to the underside of wing floor #9, base strips #21A, B, B, A, in that order. (Strips flush with edges of floor). Allow to dry.

b) Apply glue to one long edge of floor (and base strip under it) and install along bottom of right side wall, flush with the rear most edge of house. (That is, flush with end of small tab on bottom of right wall.



2. Strip out scrap and parts from Wing Side #11. Apply glue along right (outside) edge of wing floor (and base strip); Install wing side, flush with front edge of floor (bottom tab flush to rear of floor).

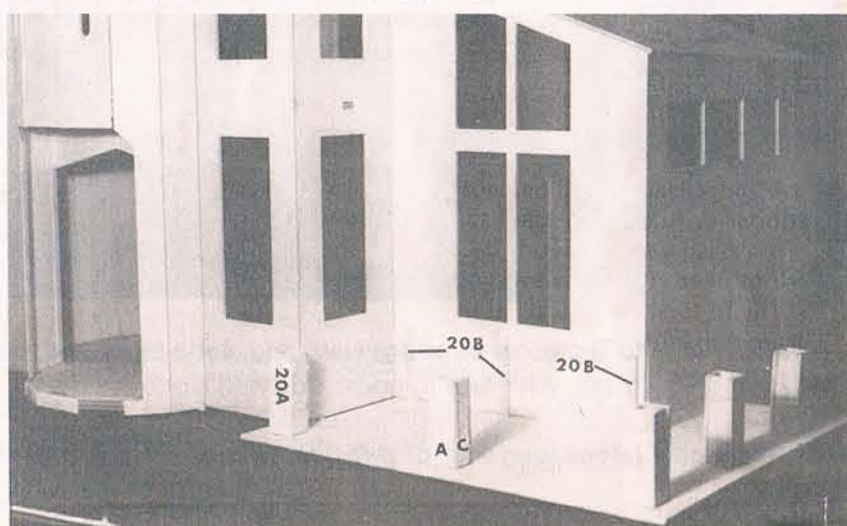
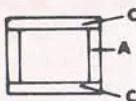
3. Install Wing Front #10 onto front edge of floor, fitting top tab into slot in right side wall. Tape corner until dry.

4. Apply glue along rear edge of wing side wall; Install Vertical Trim Strip #8R, even with top of wall.

5. Install Wing Roof #11 on top of walls, fitting rear tab into slot in right side wall of house.

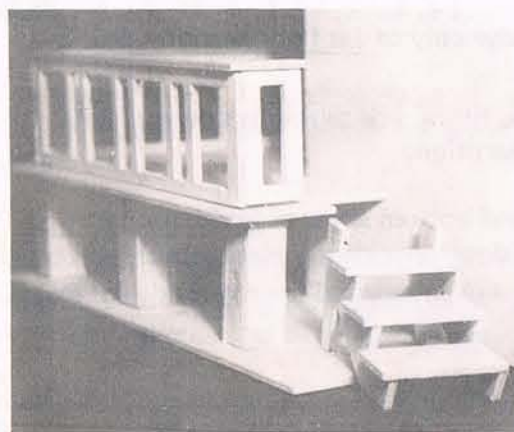
6. a) Apply glue along "inside" edges of sun deck base #20; Install against bottom of house and right wing walls.

b) Gather parts for deck pilings: #20A (10 pcs.) & #20C (10 pcs.) Assemble 5 square piling supports by sandwiching 2 pcs. A between 2 pcs. C.



c) Apply glue to bottom edges of each piling; install on the square marks indicated on sun deck base.

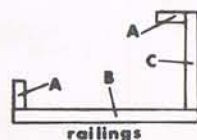
d) Install vertical floor supports #20B against Right wing front wall, resting on sun deck base, spaced to support floor (in the following step).



7. Install Sun deck floor #20 on top of the 5 pilings and 3 supports (20B). Also glue against walls of house.

8. Gather 3 treads & 2 Stairsides, #20. Apply glue along the appropriate stairside edges and install 3 treads. (See photo). Install step assembly under cut-away at rear of sun deck floor.

9. a) Gather deck railings #12A, A, B, C. Apply glue to one long edge of A and install behind end of B. Install C behind other end of B. Then glue other A behind C.



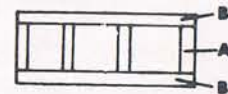
b) Gather handrails #19B, B, C, D. Apply glue to tops of railings and, in order, center handrails B, D, C, B.

c) Install Railing assembly centered on sun deck floor.

## F WINDOWS & WINDOW TRIM

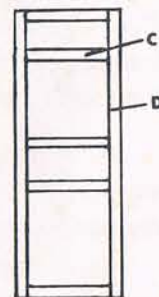
1. With a Thin line of glue, install remaining 7 plastic windows onto the exterior house wall openings.

2. Gather window trims, #11B (2 pcs.) & #11A (4 pcs.). Install around window on side wall of wing as follows: first, install one Trim A at either end of window; next, both B Trims, Then, middle two A Trims.



3. Install window frame #10 on wing front window. (Use care in removing this piece from the wood sheet).

4. Gather window Trims #2D (2 pcs.) & #2C (5 pcs.). Install around corner windows in Right side wall, as illustrated. (Hint: First glue one side Trim D, then the 5 cross pieces C, then the other side Trim D).



5. Install Right front wall window trim #7A, B, C, D.

## G STAIRCASE

1. Gather staircase parts: 10 Treads #2A, 2 stair spacers #2E, 2 stair side #2.

2. a) Apply glue along both short edges of one spacer, 2E. Position "flat" at the bottom between the 2 stair-sides. (See photo)

b) Install other spacer 2E between top of the stair-sides.

c) Install 10 treads #2A on the stairsides. Be sure that, as you face the staircase, treads overhang to your left, and are flush with right side.



Otherwise, staircase will not fit flush against wall.

3. Install this assembly against the partition wall in the house; butting against front wall. Glue top edges to underside of 2nd floor.

4. a) Apply glue to 5 bottom edges of bannister #19 and install with bottom edge resting on 1st stairtread. Top of bannister should lean against 2nd floor partition.

b) Glue handrail #19A onto top of bannister - notch in handrail to butt underside of 2nd floor.

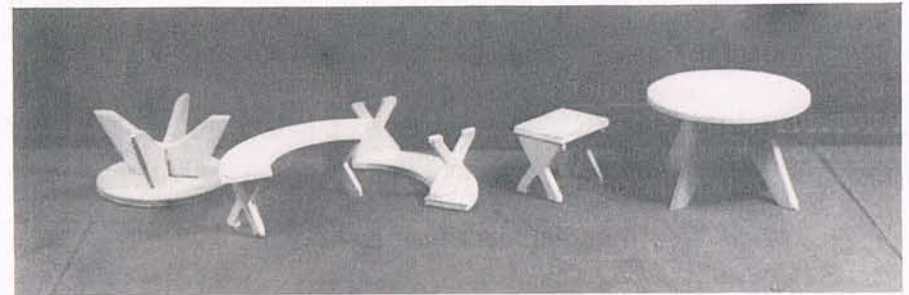
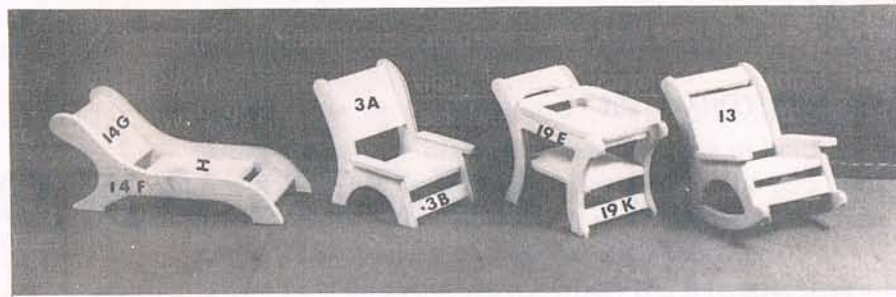
5. Gather #10 A, B, C, D. Apply glue to one short edge of railing 10D and place behind one end of 10C. Install around stairwell opening. Center handrails B & A on top.

Thank you for choosing an ARTPLY Dollhouse. We strive to give you the finest quality and value so that you will be proud of your dollhouse for many years to come. We hope that we have succeeded. Ask your dealer about other quality ARTPLY Dollhouse Kits.

# H OUTDOOR PORCH FURNITURE

Use photograph as a guide to assemble the furniture. Below is a list of the parts used.

1. 2 Chairs, Sheet #3: 2 seats (A); 2 backs (A); 2 footrests (B)  
4 armrests (D); 4 chair sides (E,F,G,H).
2. Rocking Chair, Sheet #13: 2 sides, 1 back, 1 seat, 1 headrest  
1 footrest, 2 armrests.
3. Chaise Lounge, Sheet #14: 2 sides, 1 back, 1 seat, 1 footrest
4. Tea Cart, Sheet #19: 2 sides, 1 top tray, 1 bottom tray, 1 oval  
top rim, 1 handle, 1 wheel support
5. 5 Benches, Sheet #6: 10 legs, 2 square seats, 3 circular seats
6. 2 Tables, Sheet #9: 2 tops, 2 sets small legs, 2 sets large legs.



## Template

PARTS BELOW ARE DRAWN ACTUAL SIZE

