

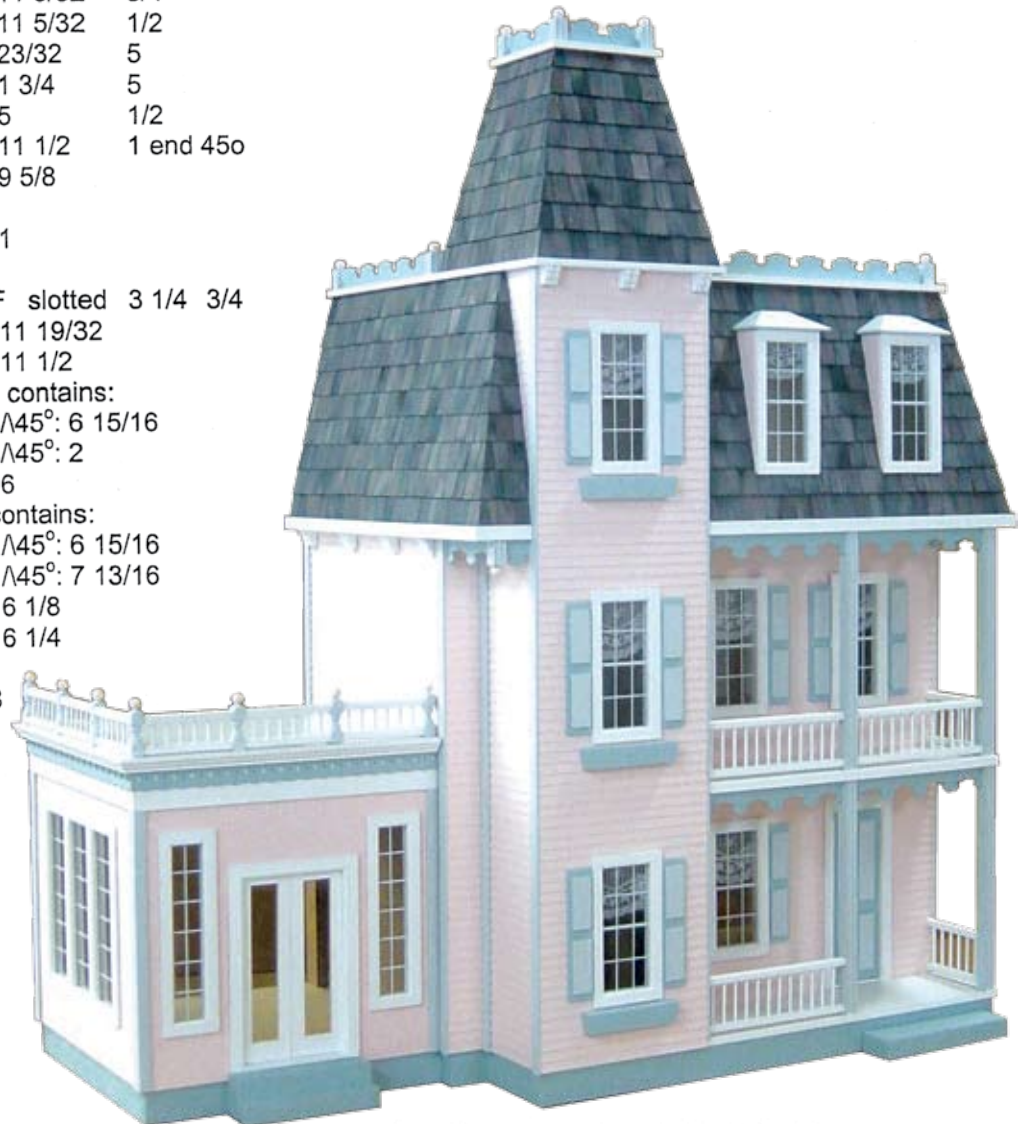
Congratulations on your purchase of the Junior Conservatory. Our design intention is to make a product that is a pleasure to build, makes you proud to own, and will last a lifetime.

Read the instructions all the way through and test the parts for identification, to see how they fit, and to plan ahead for the finishing materials you have chosen.

The JM-66 Conservatory includes foundations to match 1/2", 3/4", and 1 1/4" house foundations, and is easily built for rear access, two story, Liliput® or Junior® series dollhouses. One story dollhouses will require eave trimming, etc., and houses with different foundation heights will require customization and possibly a step from the house into the Conservatory.

Parts List: Sizes listed are approximate and are for identification only

1	Front	3/8 MDF	11	11 3/8	3 Cutouts	Groove
1	Side	3/8 MDF	11	11	1 Cutout	Groove
1	Liner	1/8MDF	10 25/32	11		
1	Base	1/4ply	11 1/8	11 1/8		
1	Ceiling	1/2MDF	12 1/8	12 1/8		Shaped edge
4	Foundation	1/2MDF	11 5/32	1/2		Ends $\Lambda 45^\circ$
4	Foundation	1/2MDF	11 5/32	3/4		Ends $\Lambda 45^\circ$
1	Foundation Spacer	1/4MDF	11 5/32	3/4		
1	Foundation Spacer	1/4MDF	11 5/32	1/2		
1	Step	3/4MDF	23/32	5		
1	Step	3/4MDF	1 3/4	5		
1	Step Spacer	1/4Ply	5	1/2		
2	Facia	1 3/8 x 1/8	11 1/2	1 end 45o		
4	Trim	7/16 x 3/32	9 5/8			
12	Rail: 3 1/4	B				
1	(36) Dowel	1/8 Dowel	1			
7	Turnpost: 1 7/8	RGT3				
1	Railing Assembly Spacer	3/8MDF	slotted	3 1/4	3/4	
1	Front Gingerbread	u-5259	11 19/32			
1	Side Gingerbread	u-5259	11 1/2			
1	Jr Tall Narrow Window, Pack of 2 contains:					
4	Vert Frame	3/8 Jamb	$\Lambda 45^\circ$: 6 15/16			
4	Horiz Frame	3/8 Jamb	$\Lambda 45^\circ$: 2			
2	Pane	6 1/4 x 1 7/16				
1	Jr Tall Triple Window, Pack of 1 contains:					
2	Vert Frame	3/8 Jamb	$\Lambda 45^\circ$: 6 15/16			
2	Horiz Frame	3/8 Jamb	$\Lambda 45^\circ$: 7 13/16			
2	Mid Frame	Jr Mid	6 1/8			
2	Trim	3/8 x 1/16	6 1/4			
2	Spacer stick	1 31/32				
3	Pane	6 1/4 x 2 1/8				
1	Door, boxed	u-1010				
1	Bag: Stucco mix					



J-M66 Conservatory shown on the J-M907 Alison Junior

Check all parts and packs against the parts list before beginning construction to identify the parts and to make sure you have everything. If you need replacement parts be sure to include the exact name and measurements taken directly from the parts list.

This instruction shows the Conservatory being built on the left side (looking from the front) of a dollhouse. If you are building the Conservatory for the right side of your dollhouse, reverse the orientation of your parts from the illustrations, and check your assembly against your dollhouse often.

Test fit all the parts and confirm the fit in place on your dollhouse each time you are ready to glue a piece in place...then you'll know you have it right.

Assembly Notes:

A large, clutter-free, well-lighted work area is most helpful during assembly, and a flat work surface is essential.

Supplies:

White glue	Sandpaper
Masking tape	Pencil
Elastic bands	Ruler
Utility knife	Paint and brushes

Don't be stingy with glue or tape. Use generous amounts of glue. Always wipe off excess glue immediately.

Check all the joints to be sure everything is tight or straight. If more tape or a helper is needed, it's good to know that before the parts have glue on them.

Make sure everything is straight and flat as the glue dries... That's the shape that will be permanent.

Assemble this kit with glue and masking tape.



The Conservatory on the left has a 1 $\frac{1}{4}$ " foundation and is set up to fit on the left side of the JM-907 Alison Junior.

Painting: Look for the Paintbrush symbol in the margins. This lets you know when our assembly pro paints before assembly at the step.

Paint the exposed surfaces of the Gingerbread, Stripwood, Turnposts, Rails, Dowels, and Window parts before assembly; but you must not sand or paint the gluing surfaces.

Paint the Window parts with several coats before assembly. Sand lightly with 320 grit sandpaper after two coats. Do not get paint on the ends (the gluing surface) or in the grooves. Make sure the window is well painted before assembly, because you will only do a skimpy touch-up after the Plexiglas is in place. Planning makes the project easier!

Paint the walls and Ceiling inside and out before assembly.

Use a high quality semi-gloss latex enamel, sanding between coats with 320 grit silicone carbide sandpaper. Avoid old gloppy paint and poor quality paint brushes. Do not paint surfaces to be glued.

For the show models we assemble at Real Good Toys, we paint the outside walls with one coat of straight paint, then, after assembly is complete but before the exterior details are attached, with a coat of paint and Stucco Mix. Keep the mix well stirred, and apply with a foam brush in short swirls, or slap the surface with your brush to make the stucco peak. Use some of the Stucco Mix for the walls, and some in a foundation color for the foundation and steps.



The Conservatory on the right has a 1 $\frac{1}{2}$ " foundation, and is set up to fit on the right side of a W-457 Lilliput Apple Blossom

Conservatory Body Assembly:

Preview: In this section, you will square the openings, and glue together the Floor and Side Panel.

Note from our Assembly Pro: The Conservatory should be build in place against the finished dollhouse, dry fit parts before final gluing, and let the glue dry with the Conservatory tight to the house.

This is the only way to get a perfect fit.



JM-66 with a 3/4" Foundation on a JM-401 and JM-44

1. Square the corners of the window openings (Illustration #1).

2. Without glue, hold the Base and Side panels together, lined up with the house to see that the Base Floor's wood grain is going the same direction as the grain of the house floors.

3. Spread glue in the groove of the Side panel. Use plenty of glue and spread it lightly with your finger to keep it from dripping (if the glue is too runny, wait a bit for it to tack).

4. Stand the Base Floor and Side on their back edges (Illustration #2) with the Base in the groove. Check the orientation again. The Base Floor will stick up 1/8" higher than the Side and is flush at the back edge of the Side panel ("flush" means 'forming a continuous, unbroken surface'). Tape the Base Floor to the Side

5. The Conservatory is on its back edge. Without glue test the Front in place on the Conservatory, flush with the Base Floor on the inside edge (the edge that will touch the house), and lined up with the Side panel on the outside edge.

6. Spread glue in the grooves of the Front panel and on the front edge of the Side panel. Set the Front panel onto the Side/Base (Illustration #3).

Make sure the Front is flush with the end of the Base; tape the Front to the Base.

Make sure the Front is even with the Side all the way from the bottom to the top (they do not have to be flush, but the edges must be parallel. This is the operation that straightens the Conservatory). Tape the Front securely to the Side to hold everything tight as the glue dries.

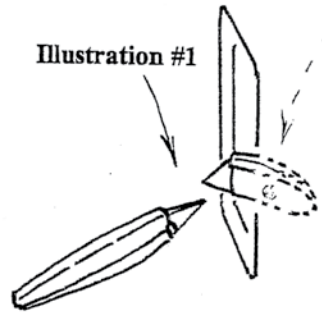


Illustration #1

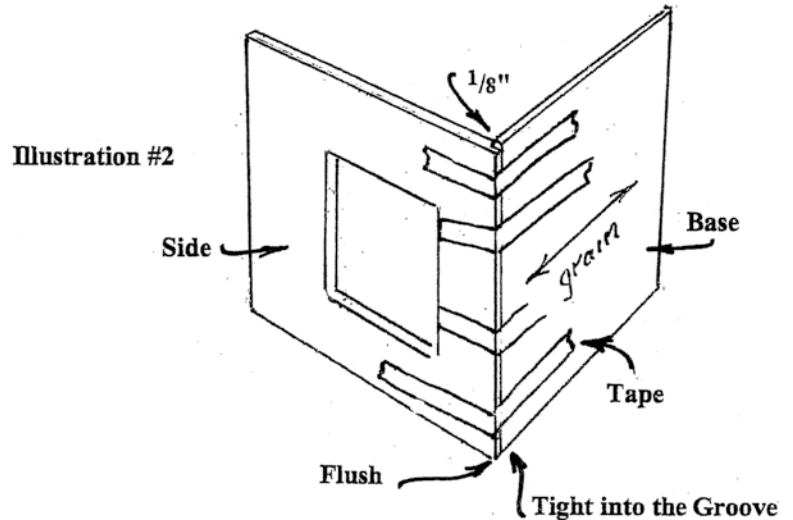
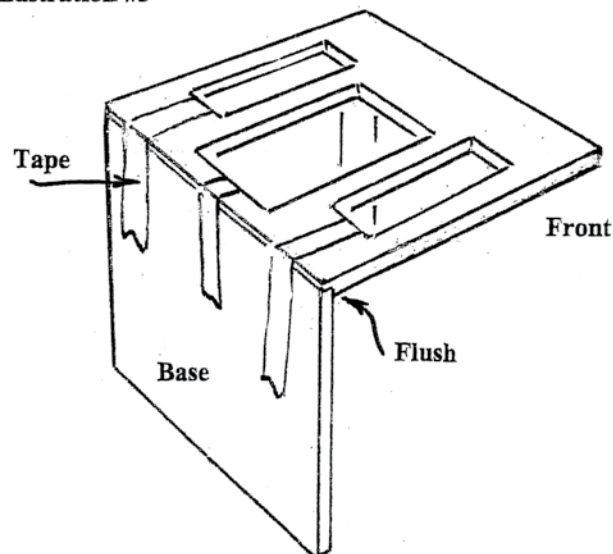
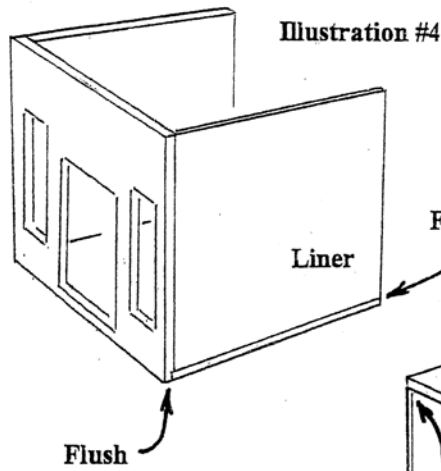


Illustration #2

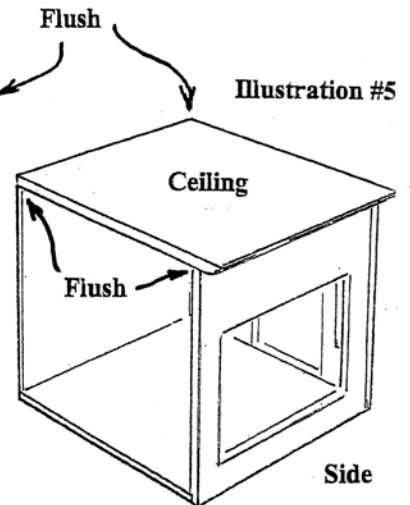
Illustration #3



7. Glue and tape the Liner to the Base and Front flush on the inside edge with the Front and Base, and flush at the back edge. (Illustration #4)



8. Glue and tape the Ceiling to all the top edges, flush with the Front's inside edge, and flush with the back edge of the Side and Liner. (Illustration #5)



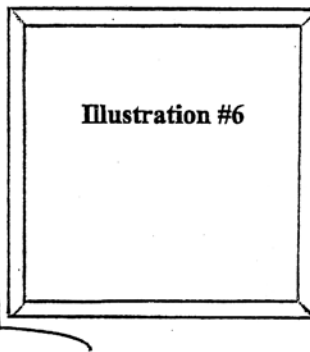
Review the fit: Check that the Base floor is tight to the top of the groove. Make sure all parts are in place and all the joints are tight as the glue dries.

Assemble and Attach the Foundation:

Preview: In this section you will build the foundation, attach the Conservatory foundation to the House's foundation, and glue the Conservatory body to the House and Conservatory foundation.

Select the foundation set that fits your house

This Conservatory may be used on Lilliput Houses (1/2" Underframes), Vt. Farmhouse Jr. (3/4" Foundations), or Alison Jr. (1 1/4" foundations).

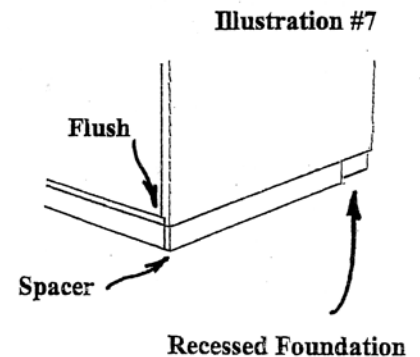


1/2" and 3/4" tall Foundation sets are supplied. For each 1 1/4" Foundation piece needed, glue together (1) 3/4" and (1) 1/2" foundation piece of the same length, flush at both ends and smooth across the surface.

9. Glue and tape together the Foundation. (Illustration #6).

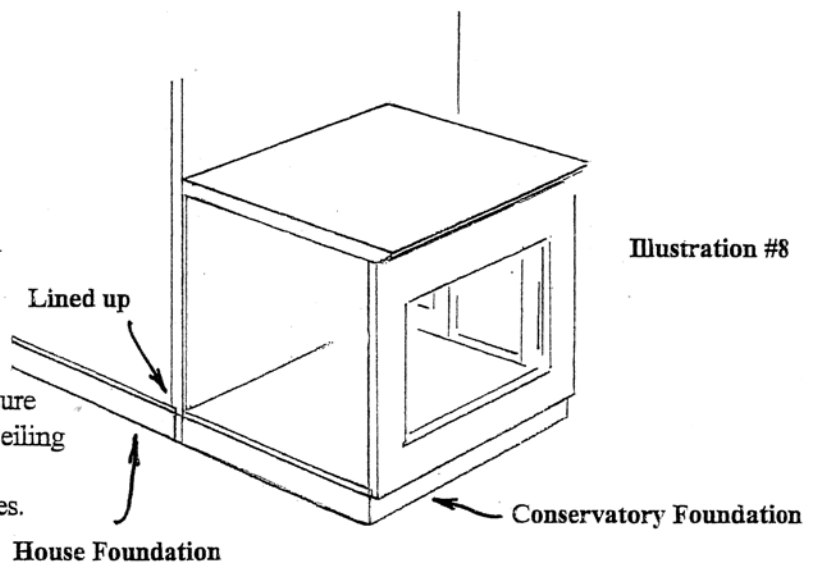
Pro Tip: Our Assembly Pro paints the Conservatory and foundation before attaching them to the house.

10. The Jr. Conservatory is NOT designed to fit against houses with recessed foundations. To block out a recessed foundation, glue the Foundation Spacer(s) to the house foundation on the side where the Conservatory will be attached, lined up at the back edge. (Illustration #7)



11. Glue the Conservatory foundation to the house foundation, flush at the back edge.

12. Glue, tape, and weight the Conservatory to the housebody and Conservatory foundation, flush at the back (Illustration #8).



Review: Check the fit of all the parts and make sure all the joints are tight. Make sure the Base and Ceiling are straight and flat. Use tape and weights as necessary to get all the joints tight as the glue dries.

Exterior Painting:

The Conservatory walls, foundation, and ceiling should already be painted. Touch-up the paint now (painting after the trim and gingerbread is attached is almost impossible).

Skip ahead to these sections to decide how you would like each part finished:

- Facia and Gingerbread (Step 13)
- Front Steps (Step 15)
- Trimstrips (Step 16)
- Railings (Step 17)
- Windows (Step 19)

13. Glue the painted Facia on the Front and Side, touching the Ceiling (Illustration #9).

14. Test then glue the Painted Gingerbread to the Facia touching the Ceiling. The Front Gingerbread is longer than the Side Gingerbread.

15. Choose the Front Step layout that fits your Foundation (Illustration #10). Glue together the Front steps as shown, sand the outside surfaces, and paint. Install the Front Steps before the #1010 Door.

16. Glue painted Trimstrips to the Conservatory touching the Facia. Attach the side trim first. (Illus.11)

17. Assemble the Railings (with painted parts):

A. Lay a Rail along the Railing Assembly Spacer, lined up on the ends and with the groove in the Rail facing the slots in the Spacer. (Illus. #12)

B. Dip the end of a Dowel into a small puddle of glue.

C. Push the Dowel into the Rail's groove using the Spacer's slot as a guide.

D. Repeat with another Dowel in the next slot, then the another.. until all the dowel slots are filled.

E. Dab glue onto the ends of all the Dowels.

F. Squeeze another Rail onto the dowel ends. Start on one end feeding the Dowels into the groove one after another, and squeezing the Rail onto the dowels. (Illustration #13)

G. Adjust the ends of the Rails to make the set perfectly square, and adjust the Dowels if necessary to make them even and straight.

Set the Railing aside to dry. Make another☺

18. Glue together the Railings and Posts (Illus 14)

Touch up the painting after the glue is dry.

Side Gingerbread

Illustration #9

Facia

Front Gingerbread

Door

1 3/4" Step

1/2" Foundation

Step Spacer

3/4" Foundation

Step Spacer

1 3/4" Step

Illustration #10

Side

1 1/4" Foundation

Door

3/4" Step

Illustration #11

Step Spacer

1 3/4" Step

Trim

Front

Rail

Railing Assembly Spacer

Illustration #12

Illustration #13

Rail

Dowel

Rail

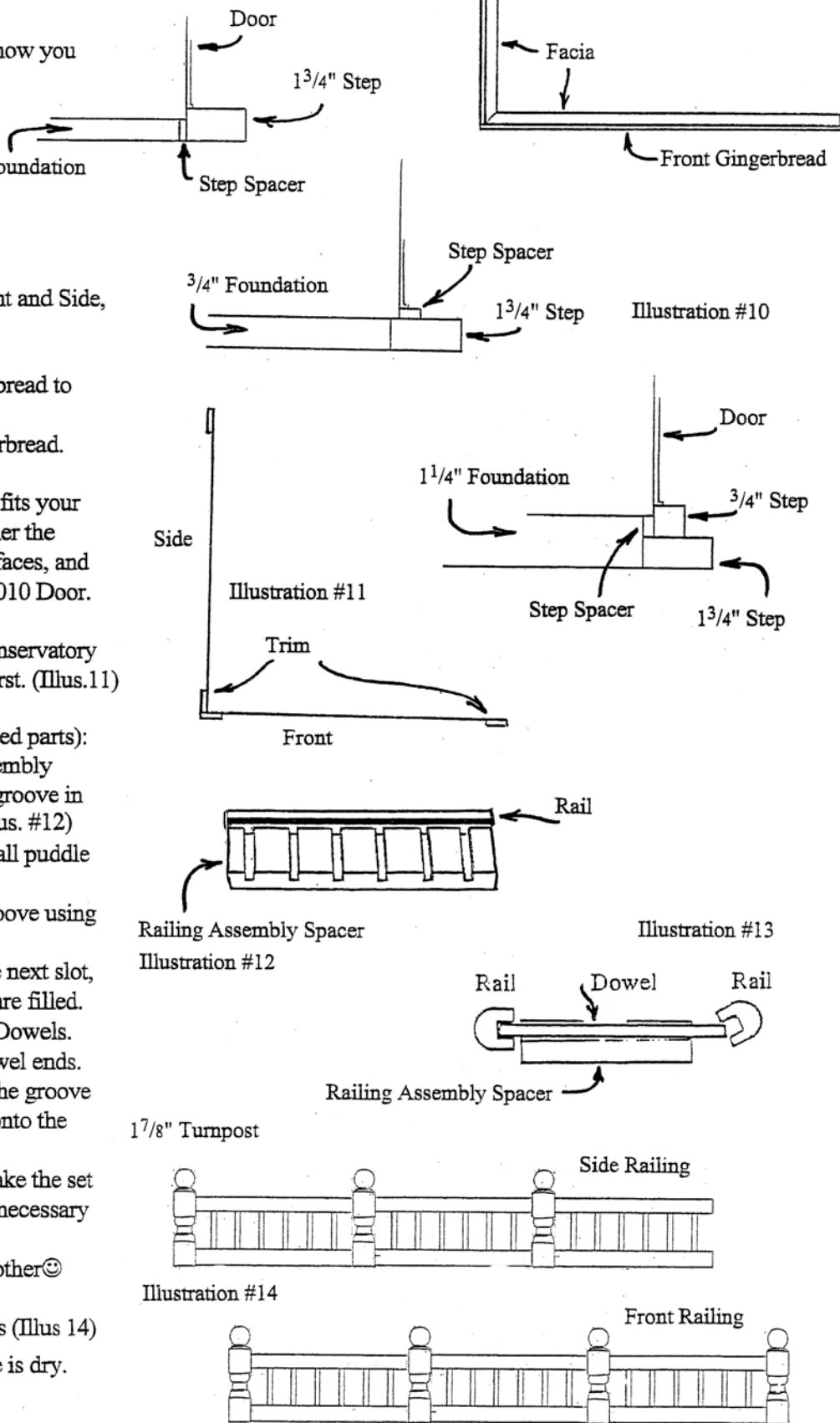
Railing Assembly Spacer

1 7/8" Turnpost

Side Railing

Illustration #14

Front Railing



Window Assembly:

The parts used in this section should be painted ahead of time. If they have not been painted, do so now.

- 19. Test assemble (*no glue*) the window set
Practice holding the frame pieces face-down on the work surface and putting on the rubber band (a scrap of masking tape in the corners helps to stabilize the parts until the rubber band is in place, but the masking tape **MUST** be gently peeled off before the glue dries). When you can put on the rubber band every time without pieces flying, then you are ready for glue (Illustration #15).

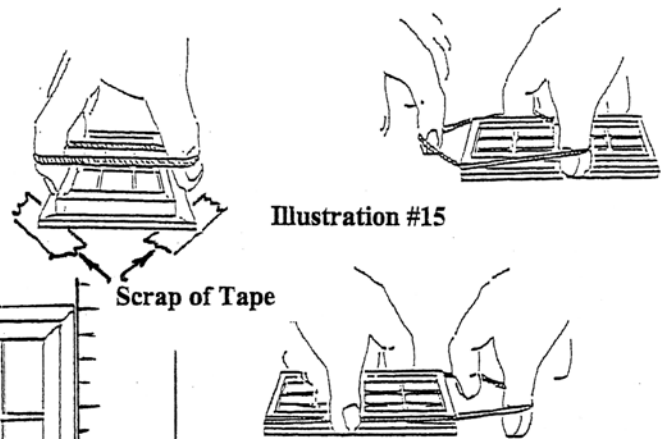


Illustration #15

Single windows

- 20. Glue and rubber band together the window frame with the Window Pane in place. Make sure the assembly is square as the glue dries (Illustration #16).

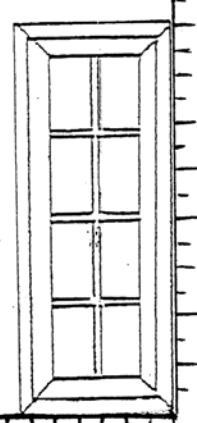


Illustration #16

Triple Window

- 21. Glue and tape together one Vert Frame and two Horiz Frames. Slide in a Pane, then a Mid Frame, then another Pane, Frame, and Pane. Glue and tape the second Vert Frame, and stretch on the Rubber band.
- 22. From the back, bend the Horiz. Frames slightly to sneak some glue onto the ends of the Middle Frames. Turn the window set face up and push the Mid Frames to the work surface. Lay the Spacers between one Vert Frame and Mid Frame to straighten the Mid Frame, then move the Spacers to the other Vert Frame to straighten the other Mid Frame. (Illustration #17) Clean up the glue.

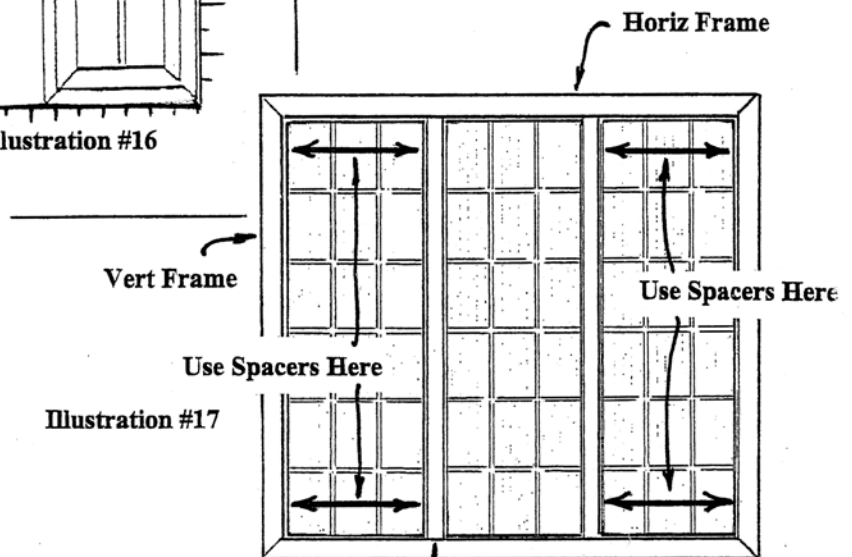
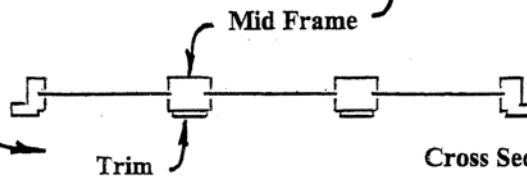


Illustration #17

- 23. Glue a Trim to each Mid Frame, centered and straight.



All Windows: Touch-up the sanding and paint, but *stay away from the Window Panes!*

Install the Windows and Door after the glue and paint are dry

- 24. Glue the Railing Sets to the Ceiling, spaced evenly (Illustration #18).

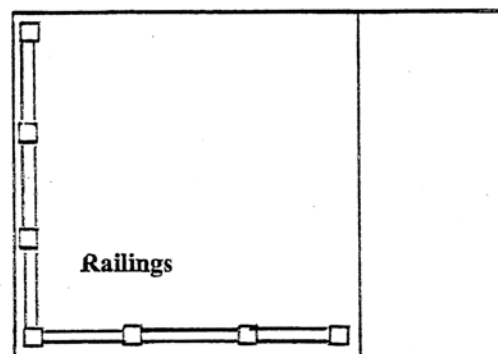


Illustration #18

**Now You are done with the Conservatory part of your project
Enjoy the Rest!**

Space Evenly